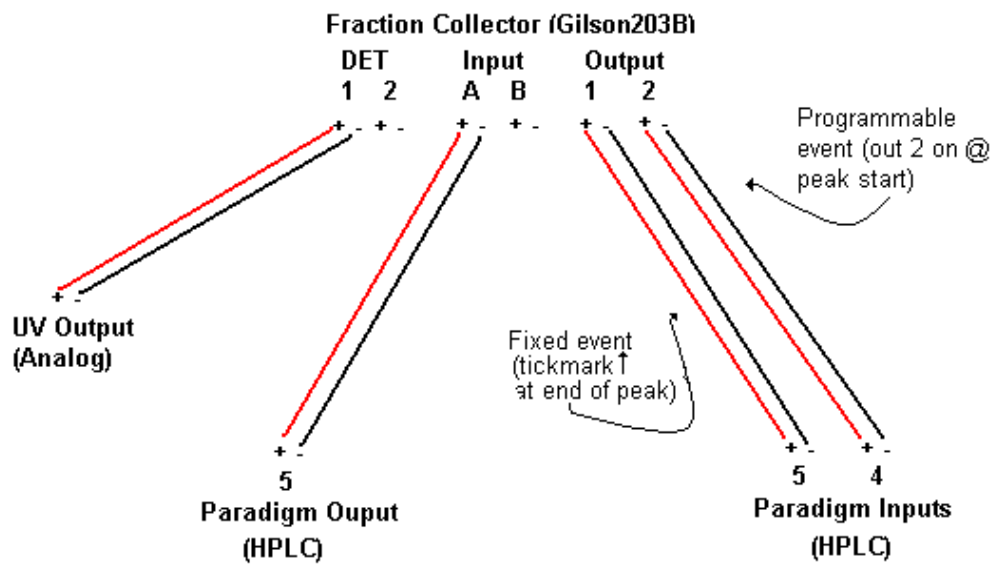


# Paradigm Software Setup for Fraction Collector Tick Marks

1. Wire the Fraction Collector, UV Detector, and Paradigm MS4 as follows:



# Paradigm Software Setup for Fraction Collector Tick Marks

2. Configure the “Mark Events” located on the right-hand side of the Event/Trigger Tab in the Paradigm Method Editor:

The screenshot shows the 'Paradigm Home Method Editor' window for a 'fraction collector test.met' file. The 'Event/Trigger' tab is active. The 'Mark Events' section on the right is highlighted with annotations:

- Mark Events**: Points to the 'Mark Events' section header.
- \*Event “1”**: Points to 'Event Mark #1: Rec. Input Trig #4'.
- \*\*Event “2”**: Points to 'Event Mark #2: Rec. Input Trig #5'.
- F/C Start Collection Time**: Points to the 'Start Delay: 3.00 (min)' field.
- F/C Delay (Offsets tick mark display by the amount of delay time from UV to F/C)**: Points to the 'Offset: 0.10 (min)' field.
- Click “Apply” when done to apply settings**: Points to the 'Apply' button.

**\*Event “1” = Programmable Event from Output 2 on Fraction Collector = Peak Start**

**\*\*Event “2” = Fixed Event from Output 1 on Fraction Collector = Advance (or Peak End)**

# Paradigm Software Setup for Fraction Collector Tick Marks

3. Add an event to your Paradigm method to send a start signal to the Fraction Collector at the beginning of the method:

The screenshot shows the Paradigm Home Method Editor interface. The 'Solvent & Event System' tab is active. The 'Solvent System' table is as follows:

Row	Time (min)	Flow (uL/min)	B (%)	C (%)	D (%)
1	0.00	20.00	5.00	0.00	0.00
2	10.00	20.00	35.00	0.00	0.00
3	11.00	20.00	5.00	0.00	0.00
4	15.00	20.00	5.00	0.00	0.00

The 'Event List' table is as follows:

Row#	Time (min)	Event
1	0.00	Valve 1 Inject
2	0.10	Valve 1 Load
3	0.02	Frac. Coll. Adv

A 'Pump Gradient' graph is also visible, showing flow percentages for Pump B, Pump C, and Pump D over time. An arrow points from the 'Frac. Coll. Adv' event in the Event List to the text 'Sends a "Start" signal to the F/C'.

Sends a "Start" signal to the F/C

# Paradigm Software Setup for Fraction Collector Tick Marks

4. Configure the UV Display Settings to “Show Events” and Select a color for each event:

Put a check mark here to display the F/C tick marks

Select a color for Event 1

Select a color For Event 2

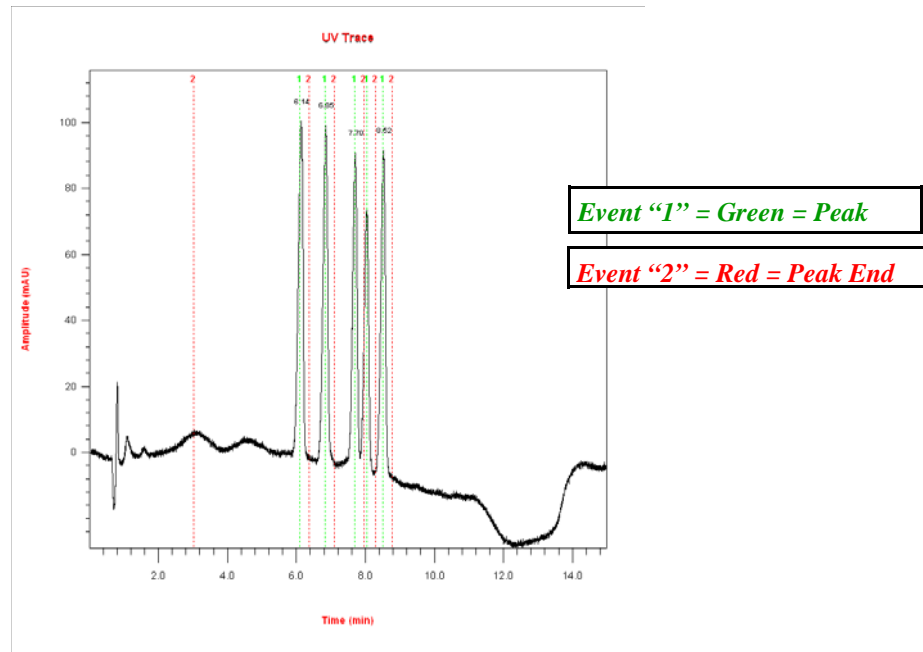
*\*Event “1” = Programmable Event from Output 2 on Fraction Collector = Peak Start*

*\*\*Event “2” = Fixed Event from Output 1 on Fraction Collector = Advance (or Peak End)*

# Paradigm Software Setup for Fraction Collector Tick Marks

5. Configure the F/C to collect by the desired mode (By Time or By Peak). See examples below:

Collection by Peak



Collection by Time

